

COMPRESSOR

Displacement (cm ³)	7.57
Diameter (mm)	25.4
Stroke (mm)	14.9
Net Weight (Kg)	10.2
Oil type	ISO VG 68 MINERAL
Oil charge (cm ³)	470

MOTOR

Approximate Power (CV)	3/8
Voltage/Frequency (V/Hz)	115V 60Hz
Voltage range (V)	98-140
Code	61.599
Type	CSIR
Phase number	1 PH
Locked rotor current (A)	30.0
Main W. resist. at 25°C (Ω)	1.21
Start W. resist. at 25°C (Ω)	7.14

APPLICATION

Application	High/Mid. back pressure
Refrigerant	R22
Evaporating (°C)	-25 to 10
Expansion	Capillar/Valve
Comp. cooling	Fan cooled
Max. ambient temp. (°C)	43

NOMINAL PERFORMANCE	CYCLE C	CYCLE D
Cooling capacity (kcal/h)	860	1008
Input power (W)	559	580
EER (kcal/Wh)	1.53	1.73
COP (W/W)	1.78	2.02
Current (A)	6.03	6.19

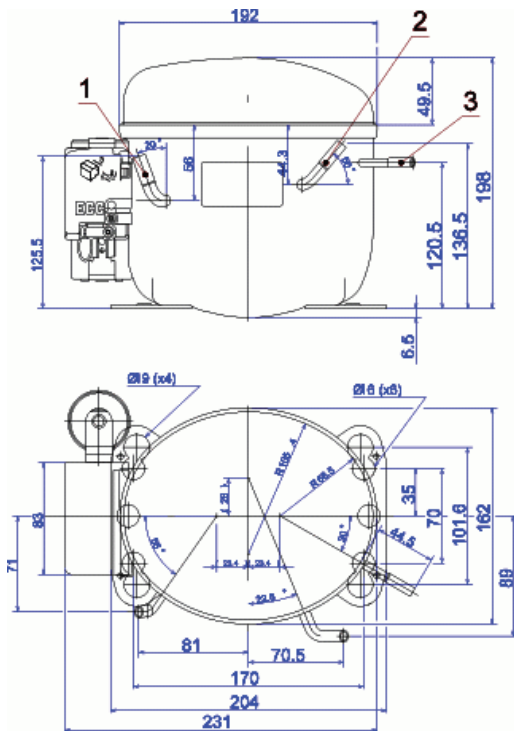
TEST CONDITIONS

Evaporating temp. (°C)	5.0	7.2
Condensing temp. (°C)	55.0	55.0
Liq.t. entering expan. (°C)	55.0	46.0
Ambient t. and return (°C)	32.0	35.0
Tens/Freq (V/Hz)	115V 60Hz	115V 60Hz

ELECTRICAL COMPONENTS

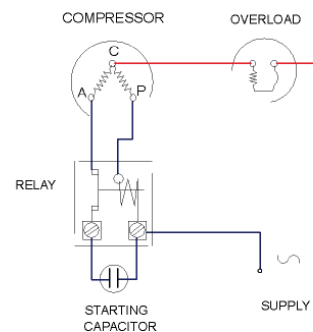
Relay	2014 180.	
Pick-Up (A)	16,70	
Drop-Out (A)	14,00	
Protector	MRA38152	T0260/G.
Current (A)	27.5	22.0
Time check (seg)	2,8-5,2	7,5-14
Disc temp. (Open/Close) (°C)	105.0 / 52.0	105.0 / 52.0
Starting capacitor (μF/V)/F/V)	250 / 160	

DIMENSIONS AND ELECTRICAL DIAGRAM



DESIGNATION	INTERNAL DIAM. (MM)
1 Suction/Service	6,5
2 Service/Suction	6,5
3 Discharge	4,9

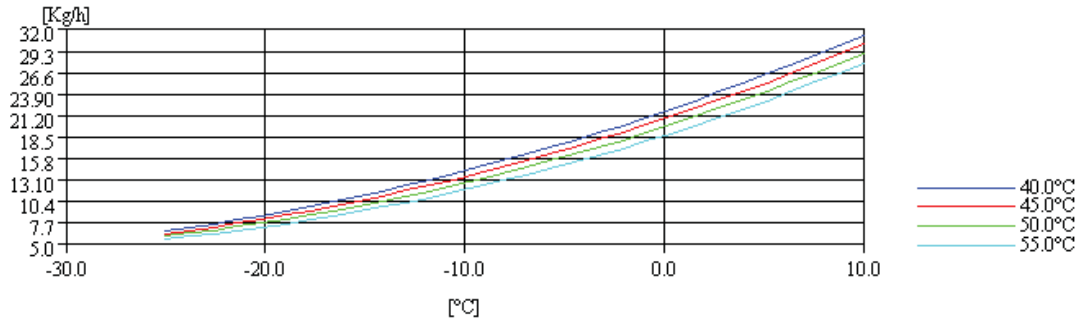
CSIR



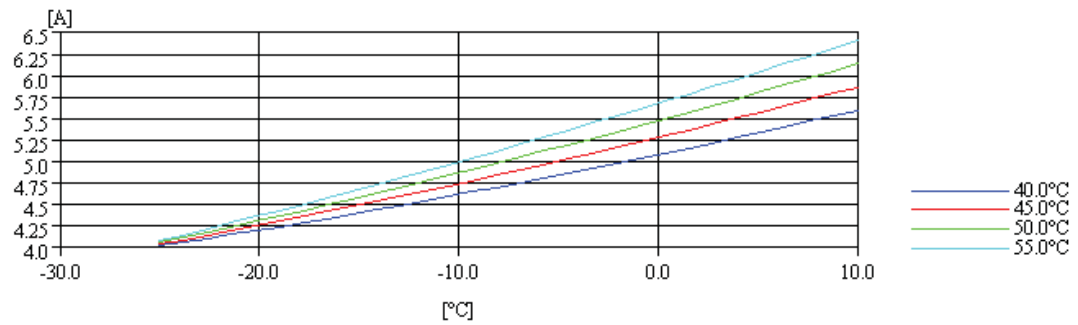
TEST CONDITIONS

Voltage/frequency	115V 60Hz
Ambient t. and return	35 °C
Liq.t. entering expan.	Subcooling 9 K

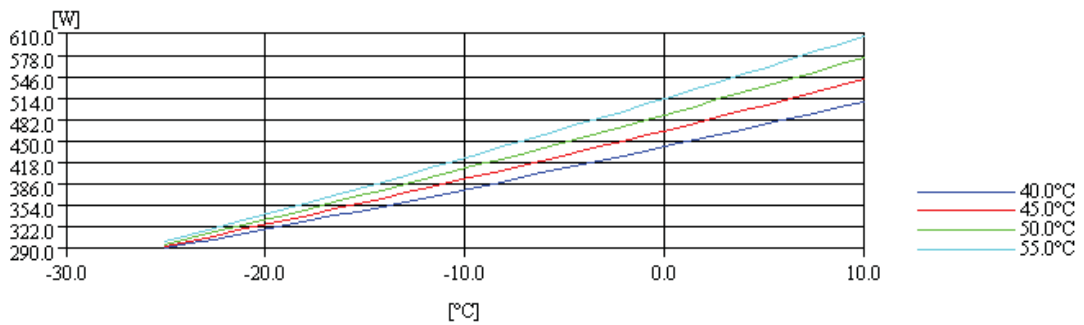
MASS FLOW



INTENSITY



CONSUMPTION



COOLING CAPACITY

